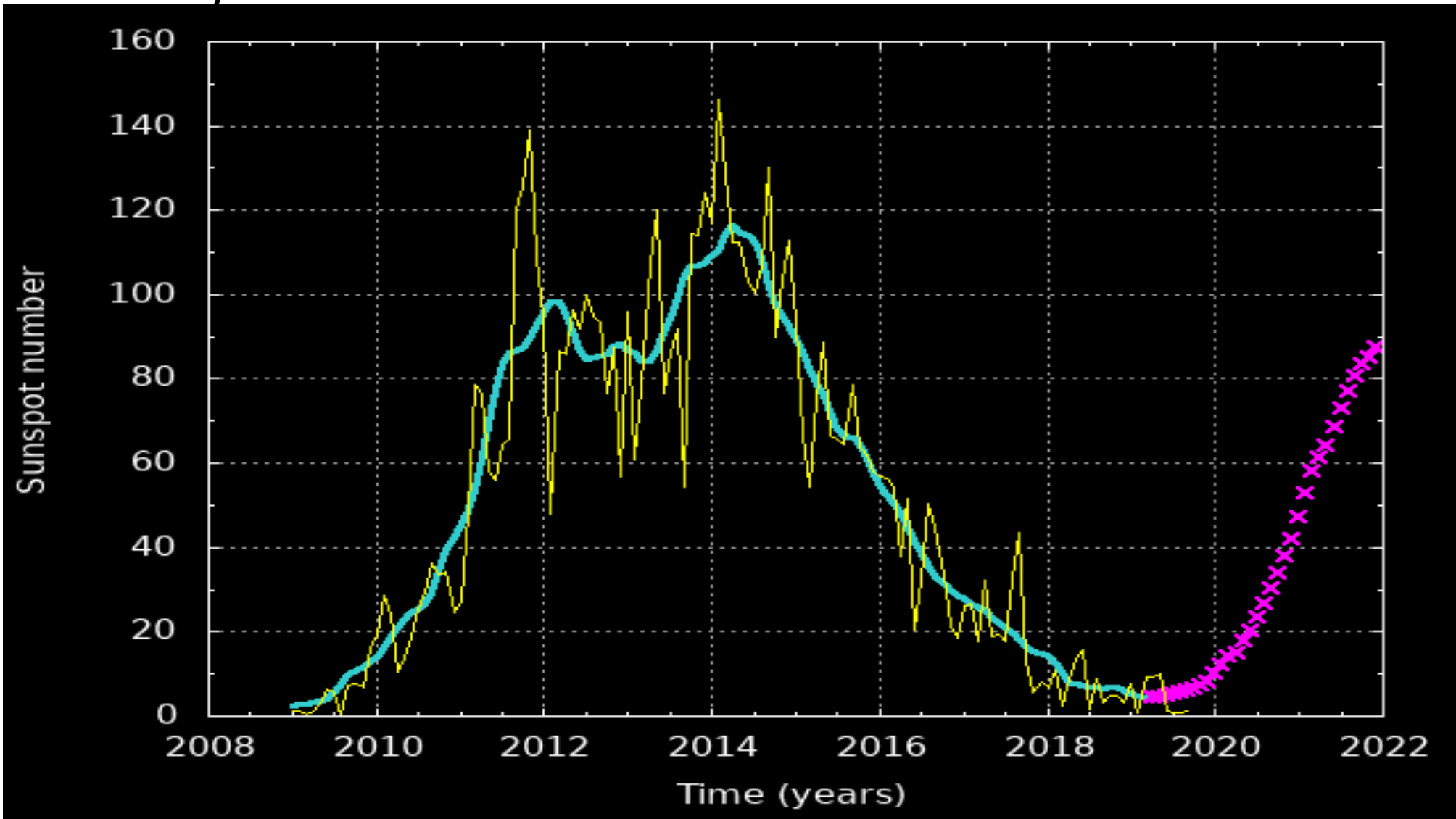


LOCAL AND COSMIC WEATHER INFLUENCE
ON HEALTH AND VIRAL EPIDEMY FROM
SPANISH 18 TO COVID 19

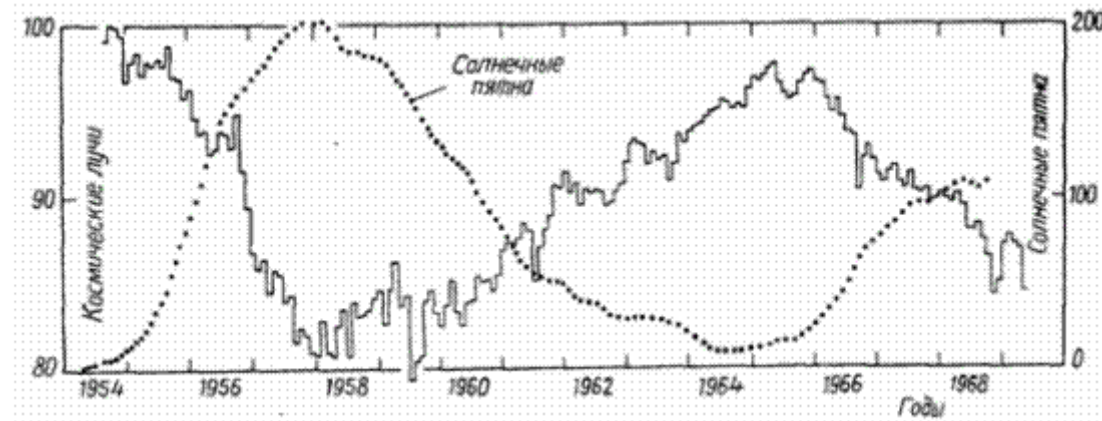
Alexander Trofimov isrica www.isrica.ru

Vincenzo Valenzi www.iiimb.me

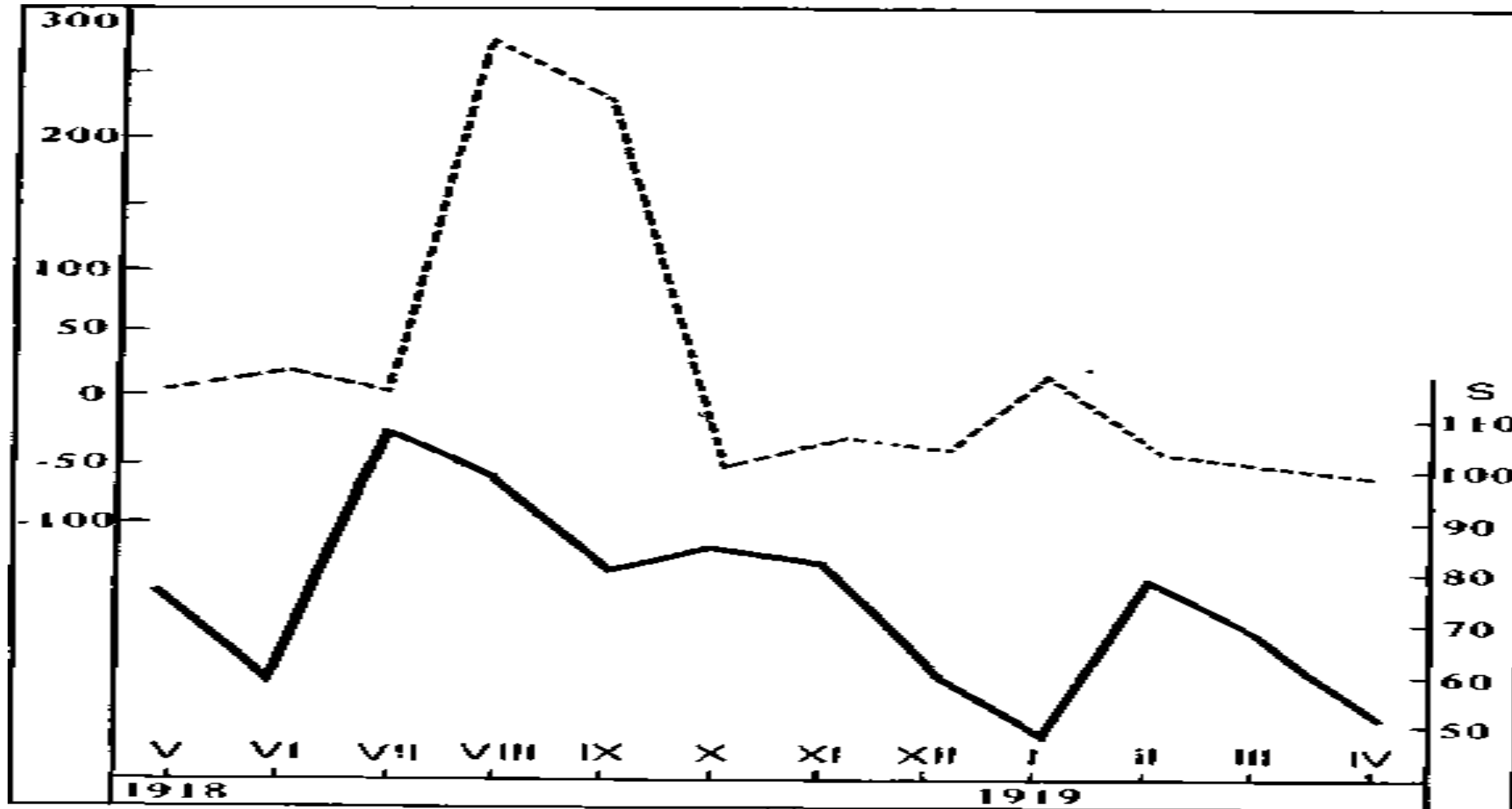
This is dynamics of sun activity for last years!! Now, on 2020 year is MINIMUM OF SUN ACTIVITY!



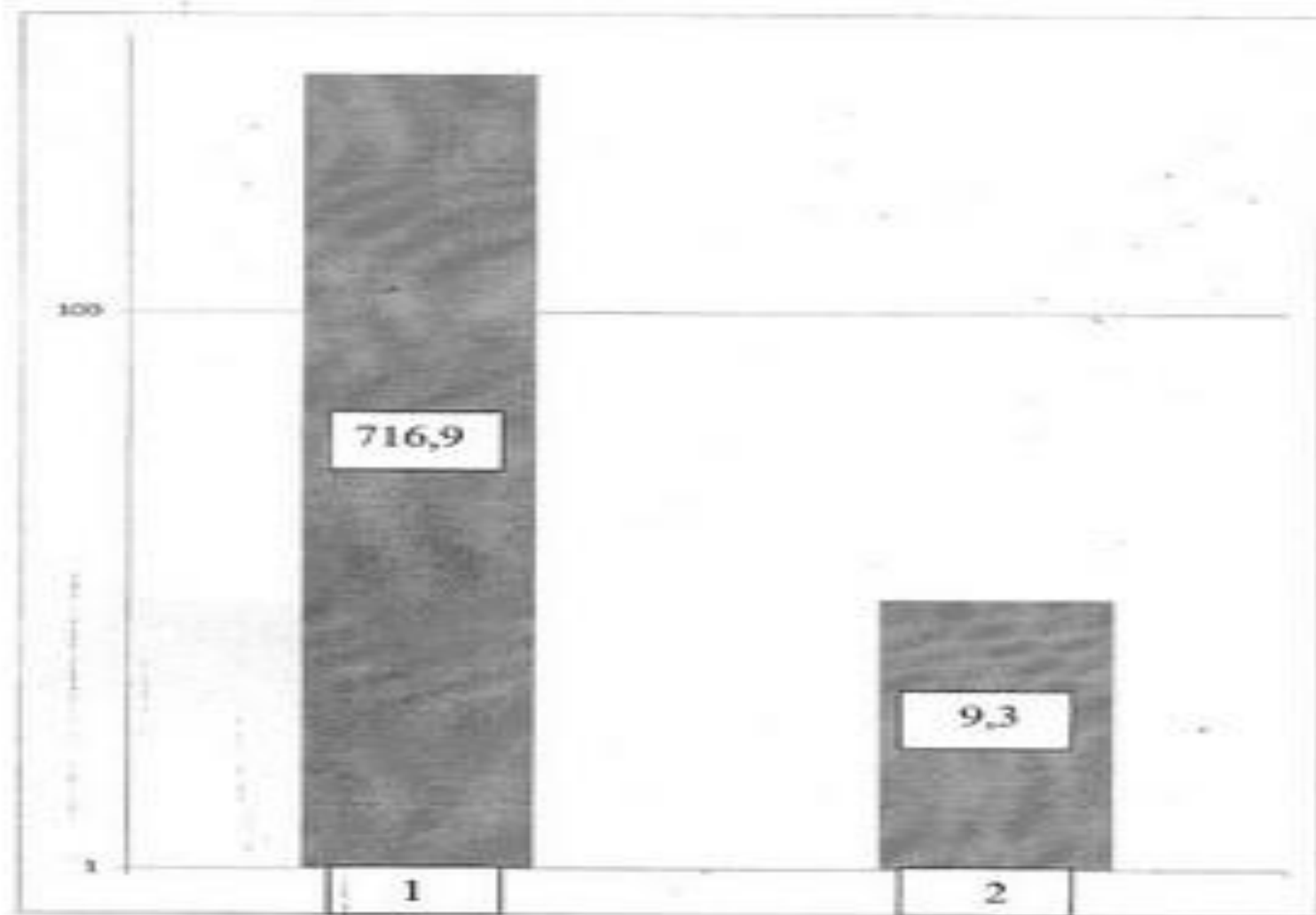
Increasing of Intensity of Cosmic Rays Streams Pressing at Periods of Minimal Sun Activity



Number of cases of Spanish Influenza, 1918-1919 years in France (high curve) increase at period of decreasing of Sun activity (lower curve)



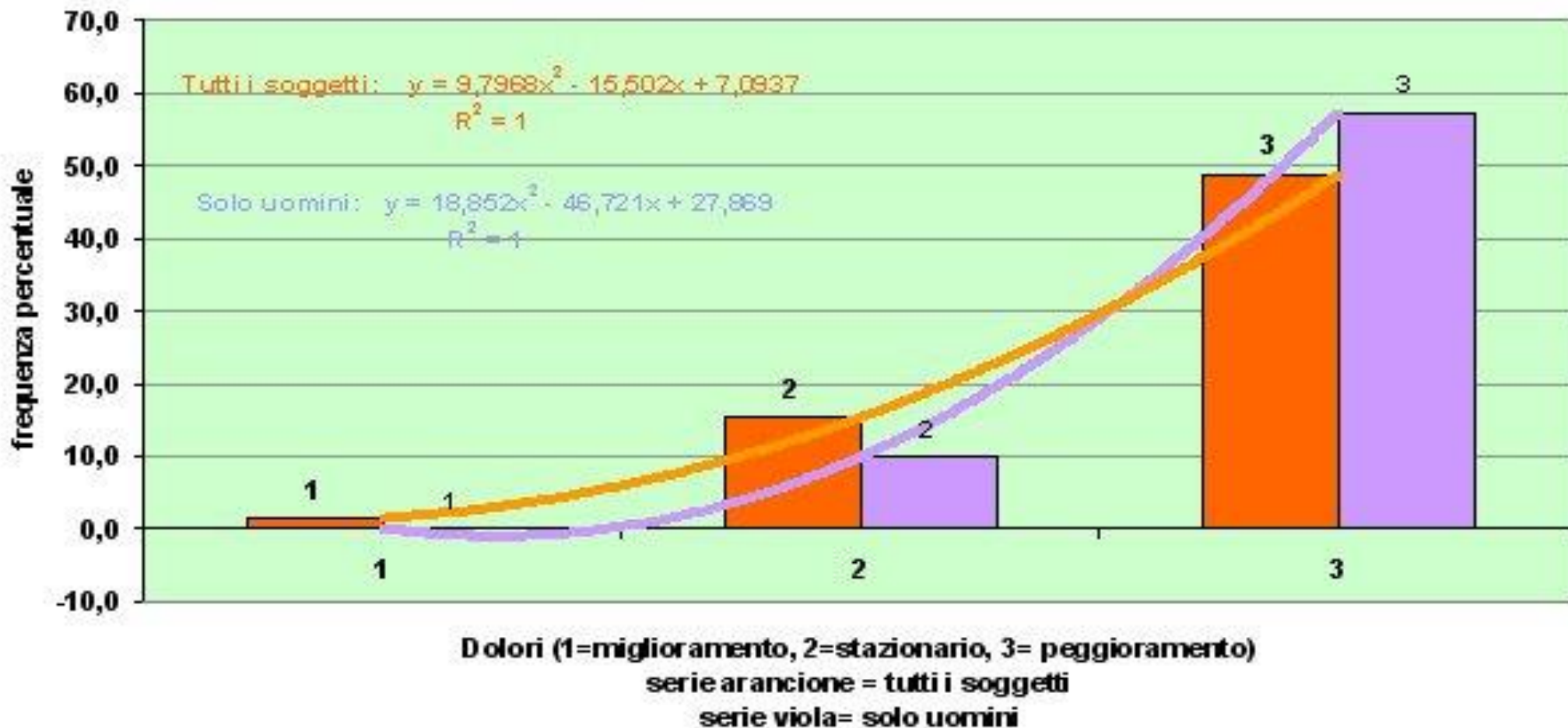
Р и с. 42. Верхняя кривая распространение гриппа во французской армии в 1918—1919 гг. (по Далатеру). Нижняя кривая деятельность Солнца за тот же период



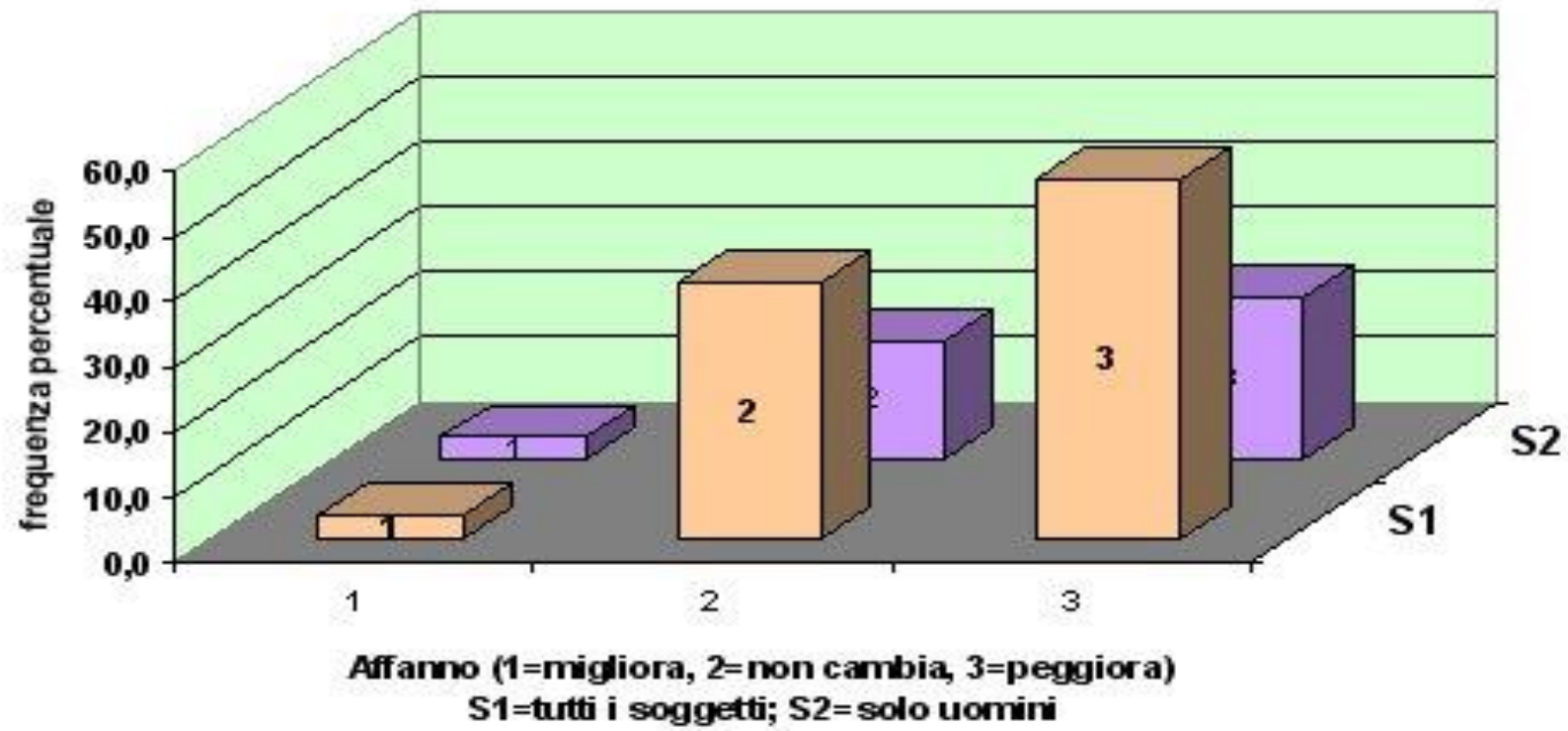
Различие в заболеваемости бронхиальной астмой у жителей Киргизии, проживающих в низменных (1) или высокогорных (2) районах страны

Жители высокогорья болеют бронхиальной астмой в 77 раз реже, нежели жители низменных районов Киргизии.

METEOROPATIC PAIN WHEN STORM IS ARRIVING



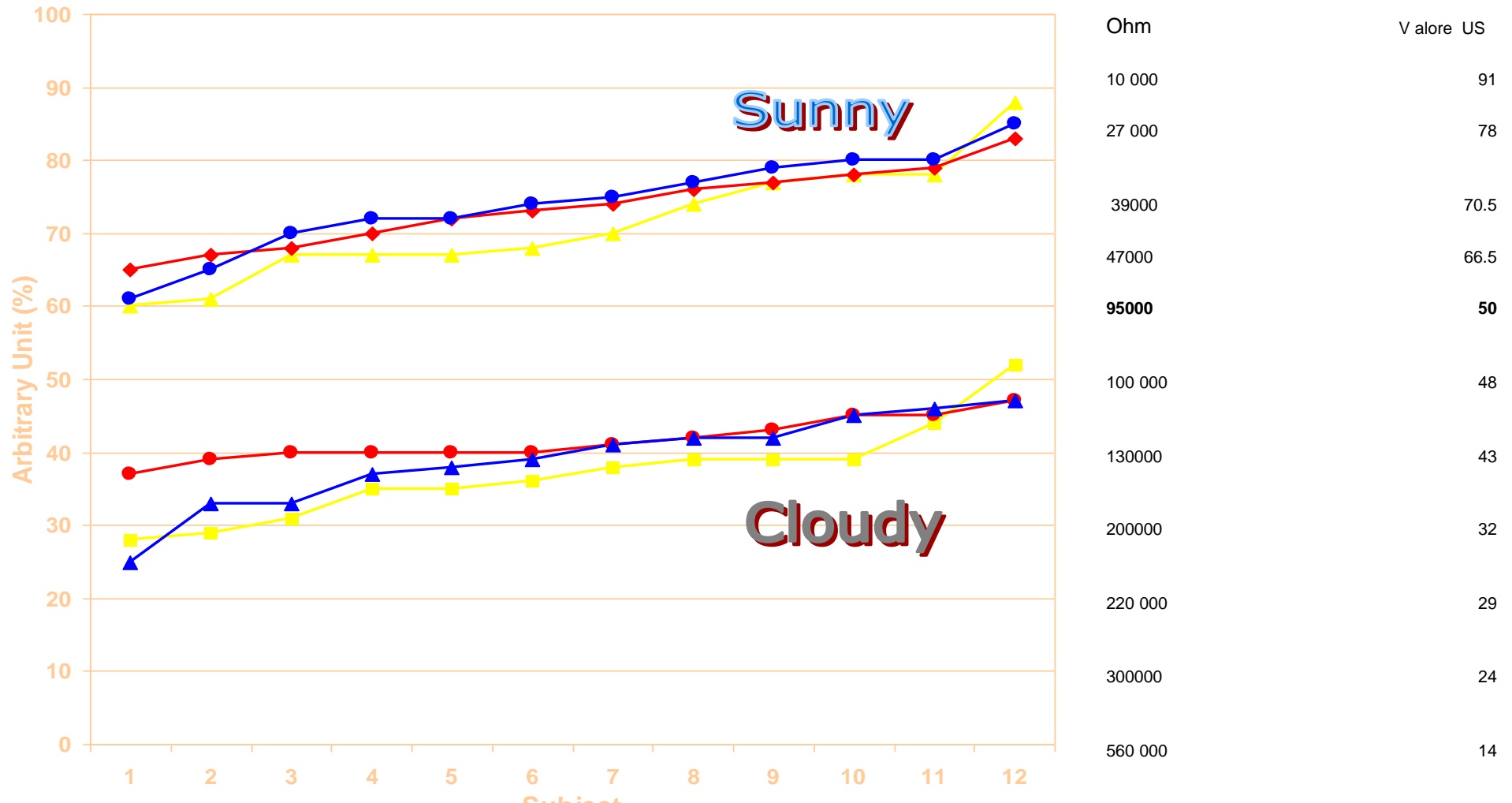
DISPNEA AND PERTURBED TIME



Metheroropatic people in sunny and cloudy day

Bioelectrical measures on chinese meridians

I V/R W VxI correlate to dinamometry



The Sensitive Bioelectrical System in Humans to em field

- A possible model could be represented by SEP/BAP (Skin Electric Parameters) that measure the Ohm resistance in the Chinese meridian see as circuits to variable resistance . On these circuits, em signal of high or low and superlow intensity, or quantum field as Potential vector in Bohm Arhonor and Josepson Effects, could be able to induce relevant modification of electric resistance as observed in some researches on Meteoropathies in Spa Medicine, in pharmacoelectrodynamics ecc. It seems indeed that the Ohm Law and em signal and quantum field could have a key role in general physiopathology

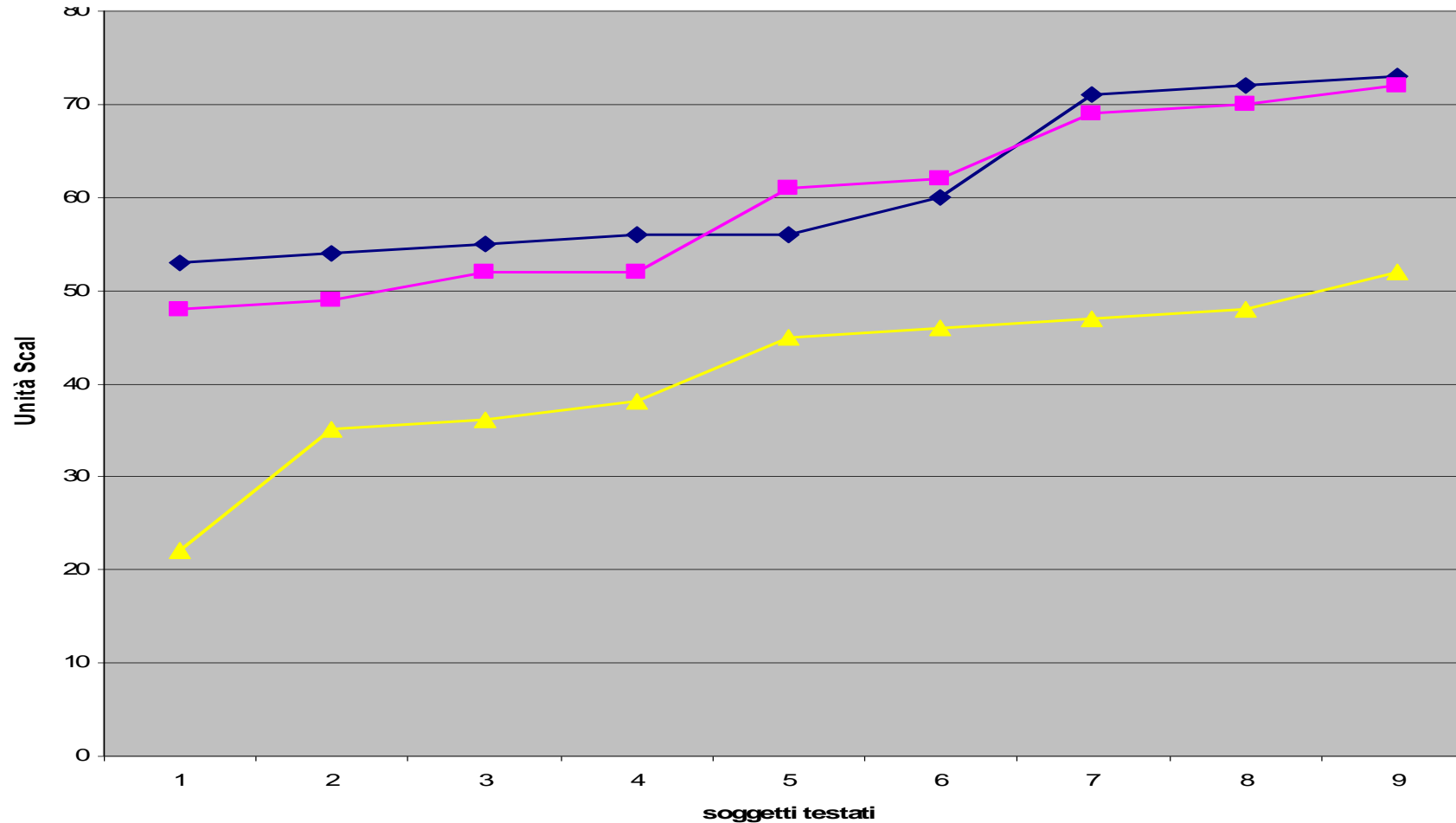
The substrate for em and quantum signal seems to be the meridians

The Ohm Law in Therapy and Biology

- Measures on meridians highlighted in subjects with meteoropathies and various pathologies, that the electrical resistance increased in physical electric circuits with a medium of about 43 scale unites of SEP corresponding to 130,000 Ω
- “Normal” level of resistance is 95.000 Ohm =50 us
- After the administration of a coherent therapy, we saw a resistance fall in medium at 39,000 Ω (70 us), with an improvement of bioelectric performance due to an increase of physical electric currents, in accordance with Ohm’s law, $I=V/R$
- Power in the biological system vary with $W=V \times I$, with functional correlations (performance status, immunological status, muscle power, pain, inflammation, allergy, dyspnea, etc.)

Effects on the conductivity by magnetic field of cell phone antenna 10 V/mt - 900 GHz on seven men exposed in amagnetic room

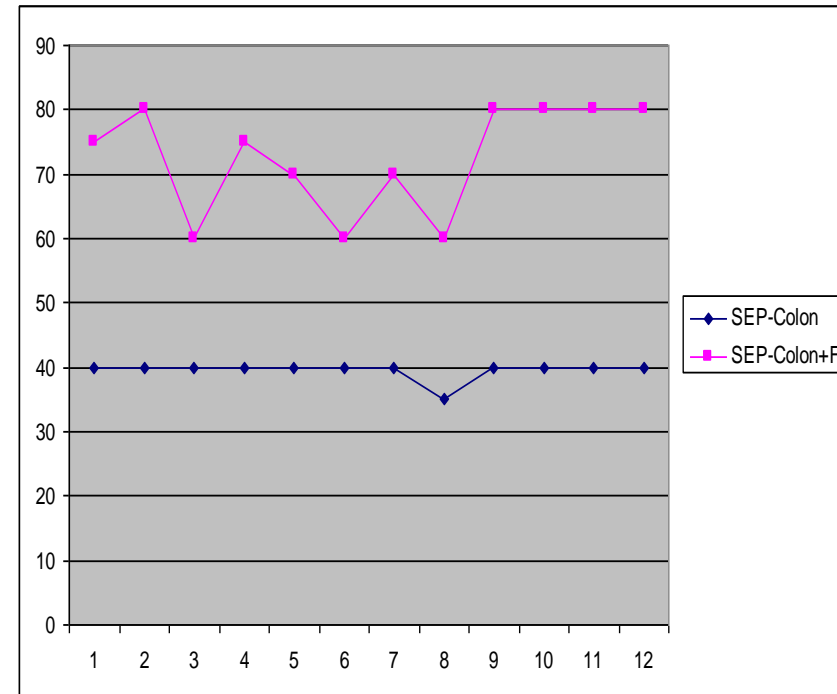
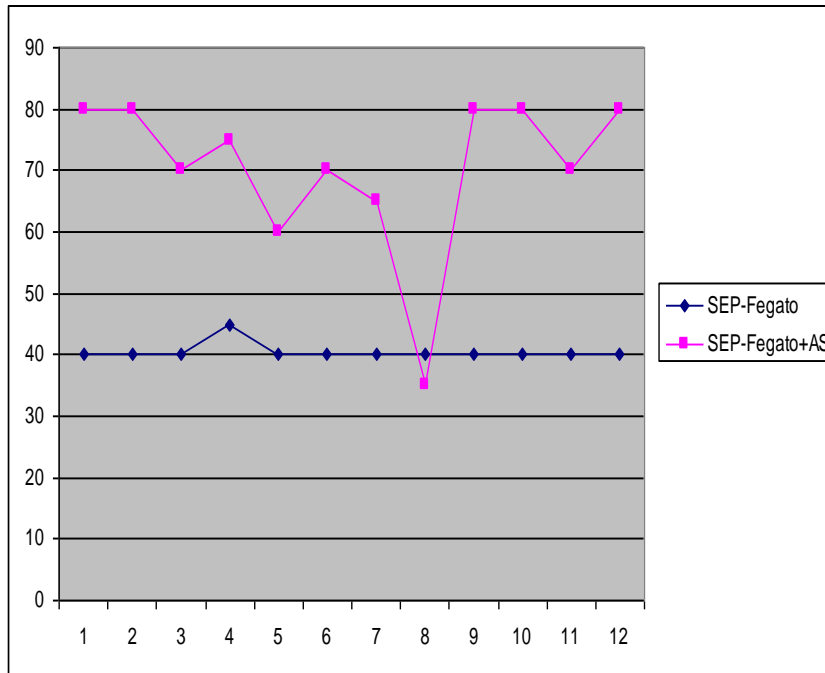
V.I.Valenzi, S. Grimaldi, G. Quartieri, G. E. Gigante; G. Mileto, G. Monaco: *Osservazioni sulle variazioni bioelettriche nell'uomo indotte da campi elettromagnetici in camera amagnetica*. Ricerca Aerosp. Pag. 33-38, Anno XXI- N. 1. 2005



SEP variations on subjects with chronic constipation in hydropinic treatment with molecular signaling of water

A. Pisani, V.I. Valenzi, M.C. Lucchetta, M. Grassi, A. Serio, P. Avino, M.V. Russo, A. Fraioli

VII International Conference “Cosmos and Biosphere”, 1-6 October 2007, Sudak, Crimea

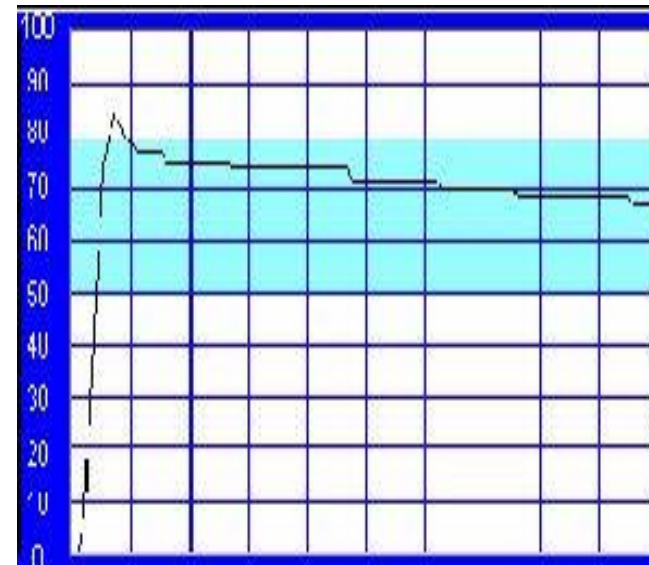
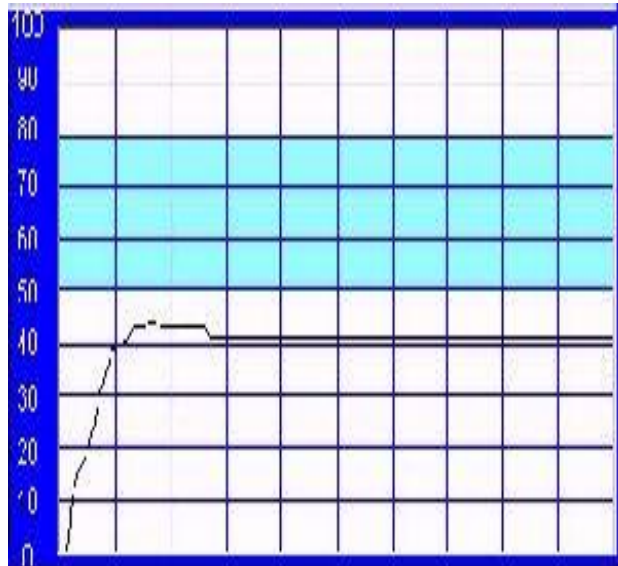


Skin Electric Parameters and molecular signaling of drug
*DRUG EFFICACY AND/OR INTOLERANCE IN METEOROPATHIC
OSTEOARTICULAR DISEASES WITH 8 FANS TESTED*

<http://web.tiscali.it/numedi/arc2002/0902/12.html>

V.I. Valenzi and M.L. Roseghini

After Nimesulide 1,5 cm max far from body



Potential Vector

The enigma of molecular signal..

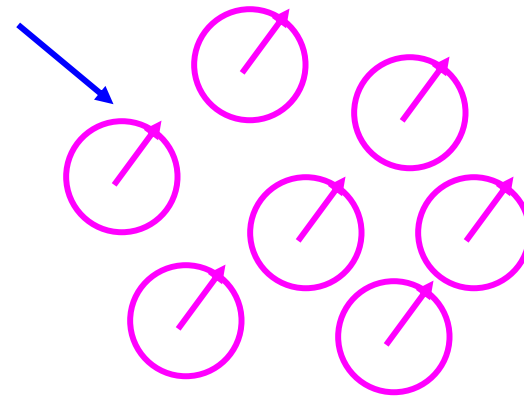
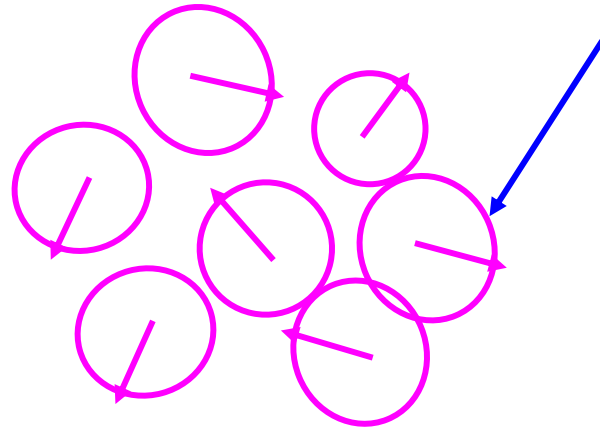
Potential Vector extends to a nearby large area, without transporting energy but just information, exerting a "fine influence", we could say "informatica", that alters the phase of the present coherent systems.

*Giuliano Preparata & Emilio Del Giudice
(Scienza e Conoscenza,*

Quantum Coherent Interactions

Luca Gamberale

Pirelli Labs - Materials Innovation Advanced Research
(Milano, Italy)



$N \sim 10^{23}$

!!!

Vector Potential in Puthof's Patent 5845220

- *“ with advent of quantum theory, however, the traditional picture change. In the prior art literature, the (vector and Scalar potentials A and Φ) formalism has emerged as more fundamental because it predicts certain quantum interferer effects that have been observed and are not apparent from the (E, B) approach. This difference was first set forth in an unequivocal way in a seminal 1959 paper by Ahranov and Bohm, entitled **Significance of electromagnetic potential in the quantum theory**” Physical Review 1959 and 1961.*
- *In these papers it is shown that in certain two-leg electron-interferometer configuration in which the potential A and Φ are established in a region of space, but B and E are absent . It is nonetheless possible for the potentials A and Φ induce changes in electron quantum interference patterns.*
- *That is , electron that are in an electromagnetic field-free region and therefore do not encounter an electric or magnetic field are nonetheless acted upon by the presence of the A and or the Φ potentials.*

Vector Potential in Puthof's Patent(2)

- *effect is now referred to broadly as a Ahnranov- Bohm effect, and device have been built which demonstrate this effect in laboratory. For a recent overview, see, Y Imry and R. A. Webb, "Quantum interference and the Ahnranov-Bohm effect" Scientific American" 260 (April 1989).*
- *A second quantum interference effect demonstrate the independent reality of the (A, Φ) potentials in the absence of the (E, B) fields (and one which is significant for the technology disclosed by Puthof) is a single-leg electron interferometer effect know as the Josephson effect; see R.P. Feynman, . The Feynman Lectures on Physics 1965) The Josephson effect is based on the fact that the current density J through a Josephson Junction (which consist of two superconductors separate by a thin insulator) is determined by the magnitude of the potential A and Φ , indep*

RISK/BENEFITS RATIO IMPROVED

- we have the chance to relance the use of great drug as cortisonic , fans, antibiotics that today in the total paradox are not full used when they need more, for example after dental surgery, in great infection and inflammations, in COVID 19 (?)
- To measure effect of extremely low concentrate drug or better to use the signal s of drug in farmacoelectrodynamics approach
- To detect therapeutically effects of some climate in mountains and Sea areas .
- To evaluate the therapeutical property of water

COST/BENEFITS RATIO IMPROVED

WE CAN LOOK FOR A PERSONALIZED THERAPY THAT CAN USE ALSO THE MOLECULAR SIGNALLING OF DRUG AND BIOLOGICAL ACTIVE SUBSTANCES FOR DIAGNOSTICS AND THERAPY <https://youtu.be/JrRAsUgCTXE>

- **WE CAN INCREASE SAFETY IN OUR LIFE AND IN OUR SOCIETY .**
- IT'S URGENT TO DEVOTE RESERCHES TO HELP MEDICAL COMMUNITY AGAINST THE COVID₁₉ ATTACK. FORTHIS WE LOOKING FOR PROGNOSES-COVID ₁₉. **READY TO GO**