

28TH INTERNATIONAL SCIENTIFIC AND PRACTICAL CONFERENCE

"ACTUAL PROBLEMS OF POST-TRAUMATIC, VASCULAR AND  
NEURODEGENERATIVE DISEASES OF THE NERVOUS AND  
CARDIOVASCULAR SYSTEMS".

*SOME CASE REPORTS ON PANIC ATTACKS AND  
PTSD TREATED WITH CHAKRA/NADI THERAPY*

---

VINCENZO VALENZI DIRETTORE DIPARTIMENTO DI MEDICINA INTEGRATA E BIOFISICA UNIFEDER DI FI -IT

DEEP N SINGH MD MASTER OF NADI WATER THERAPY DELHI INDIA

MADAN THANGAVELU PHD MOLECULAR GENOMICS CAMBRIDGE UK

IMPALPABLE, INVISIBLE AND LETHAL. IT IS THE STRESS,  
OR RATHER THE EXCESSES OF WHAT IS BASICALLY

---

A NATURAL REACTION THAT ALLOWS US TO COPE WITH  
DANGER AND MANAGE NOVELTIES.

Stress can affect the immune system in two ways:

- 1) triggering chronic inflammation that damages tissues
- 2) suppressing immune system cells needed to fight infection.



BRUCE MC EWEN OF ROCKEFELLER UNIVERSITY WROTE:

---

- «Our body is made to allow us to react to things that happen to us and changes in the environment, then quickly recovering its balance»,
- As if to say that the body reacts to external aggressions, for example by releasing substances that help us respond to stresses, increasing blood pressure and heartbeat, or strengthening the immune system to accelerate the healing of any wounds

# CHRONIC STRESS

---

- «The problem – McEwen specifies – occurs when this physiological mechanism enters a condition of overload, due to excess stress, or to the inability to reduce tension once the emergency has been overcome.»



# PSYCHOSOMATICS OF STRESS

---

- It is at this point that a state of frustration or perennial anxiety is generated, which can be translated into biological terms in a constant increase in the chemical mediators themselves, which end up wearing down the organism. And there are more and more studies that confirm the link between excess stress and different pathologies, from trivial infections to allergies, autoimmune diseases and cancer.

# THE SUFFERING HEART

---

- As for the heart, more and more studies confirm what ancient wisdom called "heartbreak", in other words the effects of our moods on the heart muscle.
- Research shows that depression sufferers have a two to four times higher risk of heart attack – or other acute cardiac event – than those in a good mood.
- And cardiovascular risk factors are also serious phobias, panic disorder and generalized anxiety, and even emotions such as anger and resentment.

# THE ENIGMA OF BRAIN MIND CONSCIOUSNESS BODY AND THE KEY OF THE CHAKRAS IN MODERN SCIENCE.

---

- The main researches in brain-mind consciousness interaction were developed by the School of Sigmund Freud when they “discovered” (which means, they theorized) the unconscious. Neurophysiologic researches using electrophysiology of the EEG, Evoked Potential, Magnetic Resonance etc. have not proven capable fully of clearing the abounding enigmas of the unconscious. The great struggle to clear the dark matter of mind and consciousness were carried forth by Sir John Eccles, Mario Tiengo, and others.



**Tiengo M. Talking with Sir John, interview with John Eccles on the theory of psychons. In: Seminars on pain. Mattioli Editore, Fidenza, 1992: 2:31-36.**

Eccles' proposal of the theory of psychons,(17) according to which psychons interact with the neurons of the cortex through fields of quantum probability modulating their synaptic exocytosis, was not pursued. However, as specified by Tiengo, it is of crucial importance because it is the first attempt at providing a quantum interpretation of the mental modulation of pain perception.

If the paradigms of classical Newtonian physics can be applied to nociception, pain, as well as all the scientific research on mind, consciousness and self, requires a different interpretation: the key is quantum physics.

Tiengo writes: "The perception of pain can therefore be explored more deeply with the elusive world of quanta, conclusively recognising the failure of any attempt to reconcile clinical evidence and experimental data with common sense."(18





# THEORY OF PSYCHONS OF ECCLES COULD BE RELATED TO CHAKRA AND SUBTIL BODY OF INDIA ?

In the Far East, (in China and India especially), several practical approaches to BMC were developed; and acupuncture and the Chakra system prove very useful today to guide the scientist in the labyrinth of unconscious and psycho-somatic interactions [see <https://mail.google.com/mail/u/1/> ].

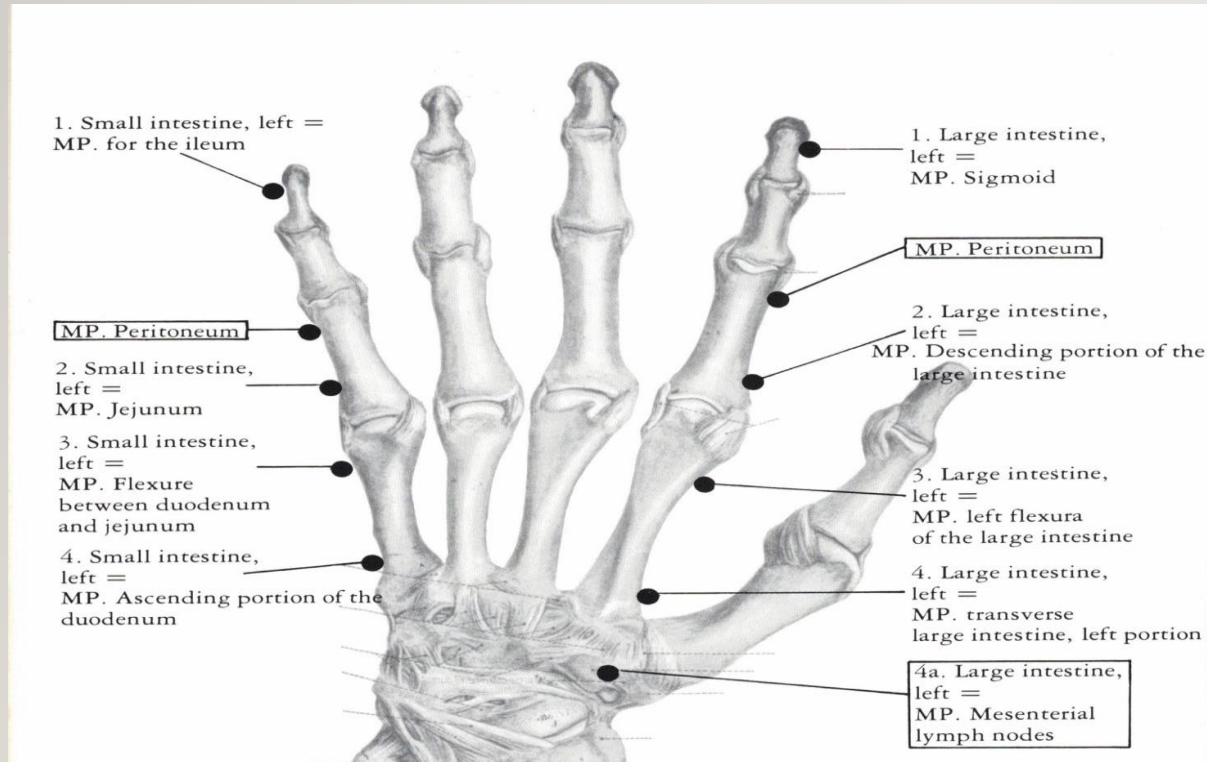
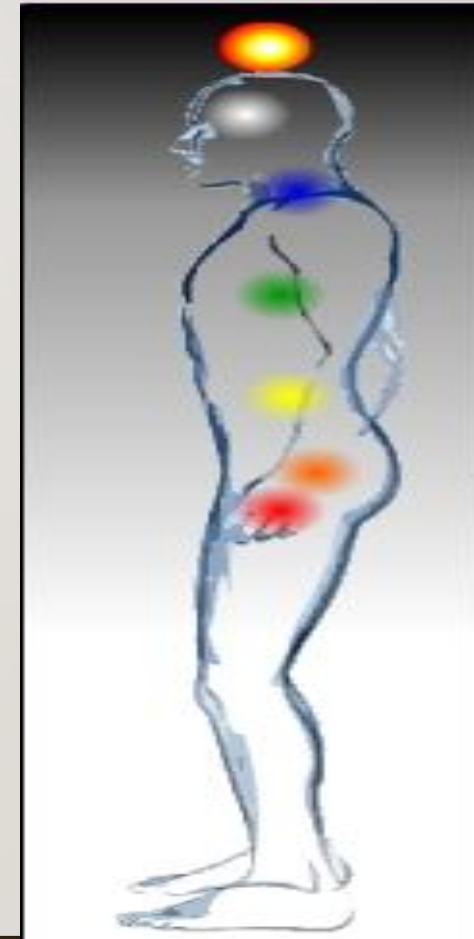


Fig. 10a. MP. for the left duodenum, left small intestine, left large intestine on the (left) hand

The MP. Peritoneum of the colon, left side, comprises furthermore:  
mesocolon transversum, left portion, mesocolon descendens, and mesocolon sigmoideum  
recessus paracolici as niches of the left peritoneum at the colon descendens  
omentum majus, left portion  
ligamentum gastrocolicum, left portion  
ligamentum phrenicocolicum as a peritoneal fold between diaphragm and descending colon.



# THE BIOPHYSICS OF MIND BRAIN BODY CONNECTION

The main contributions in this direction came from the physicist David Bohm on the hidden function; also, other strong contributions are coming today from the researches of Brian Josephson Nobel Price for super conductivity [for more information on the subject, see this link - [www.britannica.com/biography/Brian-Josephson](http://www.britannica.com/biography/Brian-Josephson) ]. These biophysics models are progressing in developing bio-technology applications by means of the production of an innovative bio-tech device which measures the bio-electrical status of meridians and, in the latest developments of these machines, of chakras and their functional connection, well known in the practices of Old Hindu and Chinese Medicine, entirely connected with physio-pathology and human health status. All this aims to fully monitor every dysfunction through all levels of complexity of the HRV system.





# Helper Personal M

91 Chakro-  
terapiya



# MY MEETING ON THE BRIDGE BETWEEN WEST AND EAST

---



In 1995, in Rome, I met my master Dr Umberto Grieco MD. He introduced me to the important perspectives of human health and wellbeing offered in the ancient and traditional Oriental School of medicine and how to use this in my practise and my activities on the theoretical foundations of human health and disease. Grieco's work and thinking then seemed very far from daily modern medicine, but he used it very powerfully to manage a number of chronic diseases and acute conditions. Dr Grieco had realized a very fascinating and important integration between modern medical school and ancient medical traditions. Dr Umberto used in his work the Orgonic Biotensor, a mechanical sensor to monitor the level of homeostasis.





# LIFE FORCE, BIOENERGY, PRANA E ORGONE ESOTERIC DREAMS O REALITY OF NATURE?

I was working then on the Free Energy of the atmosphere as developed by Dr Wilhelm Reich with his dispositive to accumulate and for therapy

<https://www.gruppomacro.com/prodotti/wilhelm-reich-epub> .

---

My effort till then was to clarify the connections between Prana and Orgone and how to use modern science to find a bridge with some of the great developments introduced in Europe on nadi-chakra (from Indian systems) and meridians (from China) for monitoring the subtle body. Over a long period following these early studies, and together with some leading scientist in the world, we have since developed some important experimental and theoretical considerations reviewed in 2018 in **"Some Observations on the Role of Water States for Biological and Therapeutical Effects"** <http://ibb.kpi.ua/article/view/140255>. This work cleared many aspects of 'order and disorder' in Life and life processes.



# COHERENT QUANTUM ELECTRODYNAMICS APPLIED TO LIFE AND IPER-CONDUCTIVE PHENOMENA IN MERIDIANS/NADI ON LIFE SYSTEMS

---

- Several of these suggestions are consistent with Coherent Quantum Electrodynamics and could explain many enigmatic phenomena, where weak and super-weak signals are able to induce iperconductive phenomena in the electric circuitry in the body, some of these perhaps connected to meridians-chakra-nadi systems. These suggestions are elaborated and reviewed in the work of Widom, Srivastava and Valenzi **The biophysical basis of Benveniste experiments: Entropy, structure, and information in water** <https://onlinelibrary.wiley.com/doi/abs/10.1002/qua.22140>

# NEURONS AS A TRANSCEIVER QUANTUM ELECTROMAGNETIC ANTENNA?

<https://www.consciocentric.com/articles/the-brain-is-a-transceiver>

<https://www.scienzaeconoscenza.it/blog/consapevolezza/neuroni-come-bioantenne>

---

- Some recent developments in the broad areas of biological technologies in the last years appear also to support the more enigmatic/esoteric area of the connections between BODY, BRAIN, MIND and CONSCIOUSNESS. They point to the biological basis and maybe also the physical basis of such phenomena. I was informed about by such possibilities and also learnt these skills from my master Dr Grieco. It is now a great pleasure to be introduced to another master, Dr Deep, who is also able to treat complex disorder of subtle body Nadi and Chakra. The CHAKRA NADI SYSTEM as shown in the work of Dr Deep might be further refined into high levels of skill and efficiency in the treatment of BRAIN MIND CONSCIOUSNESS disorder that induce insomnia, psychosomatic diseases panic attack and PTSD. Such approaches hold great potential for the future.



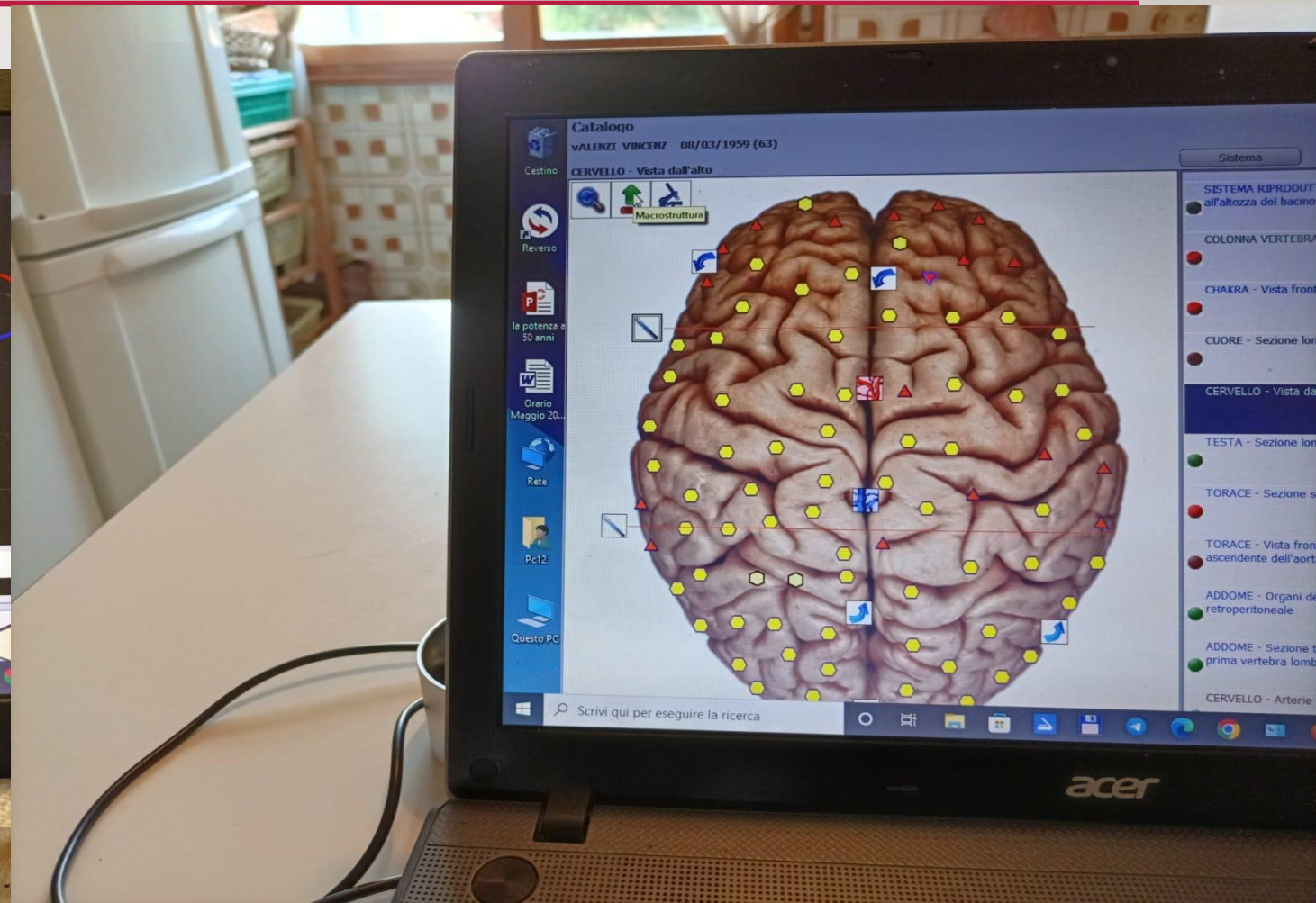
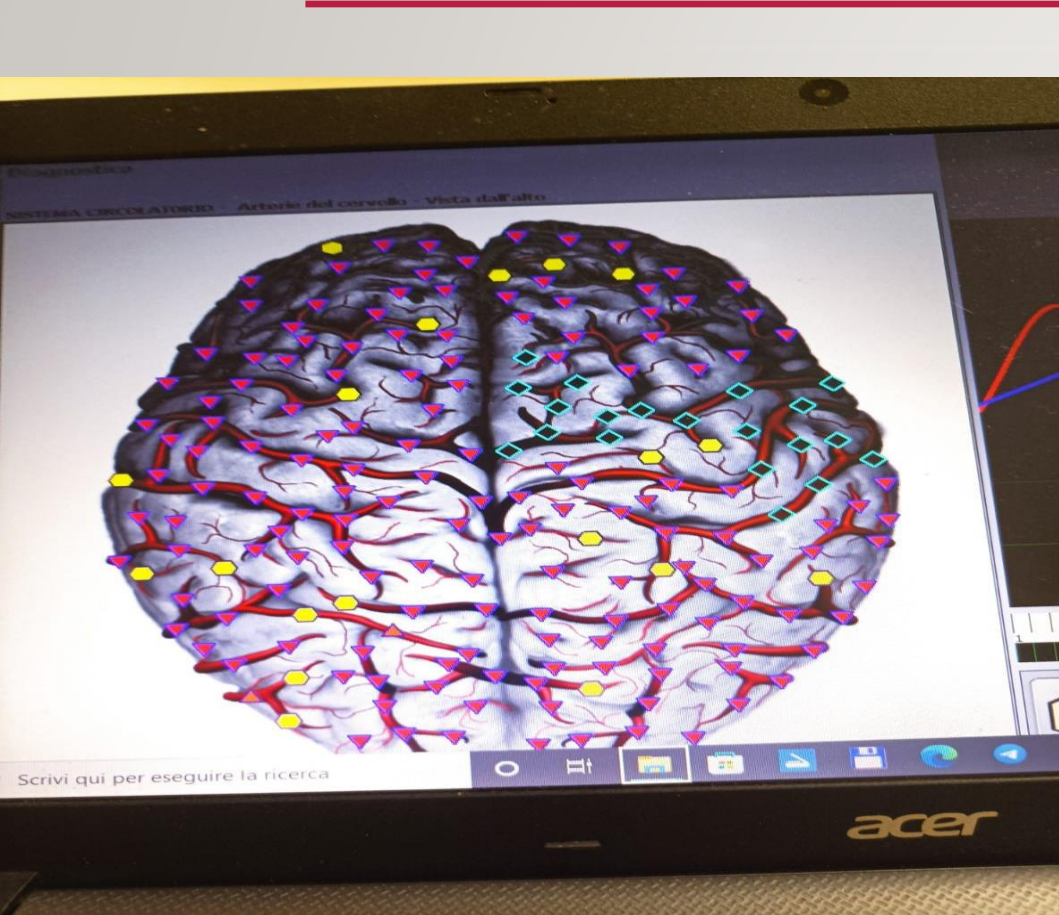
# A VERY PERSONAL CASE REPORT

---

- Personally, over the last months I was in a very stressed period of my life, with insomnia and general “incoherence” in brain and body, without any efficient therapy in modern medicine for myself. Dr Deep’s treatment based on India’s Chakra-Nadi understanding has helped me a lot also if pressure of daily stress continues to produce disorder in my performance and health status, monitored with electroquantistic biotechnologies that measure the state of bioelectrical homeostasis in the organs on the meridians and Chakras up to the cellular states. It seems that in the etiopathogeneisis of the psychosomatic disorder there may be Borelliosis with Lyme disease and the pharmacoelectrodynamic therapy with tetracyclines has clearly improved the clinical status performance status with correlated instrumental improvement.



# COLOR SCALE OF HOMEOSTASIS AND/OR ENTROPY IN THE BRAIN





WHAT HAPPENS IN WATER AND IN MERIDIANS/NADIS IN  
RESPONSE TO SIGNALS OF VARIOUS ORIGINS: MUSIC  
ELECTROMAGNETIC FIELDS DRUGS, BRAIN SIGNALS, ETC?  
THE CASE OF STORM GLASS OF FITZORAY PICCARDI VLADIMIRSKY

---



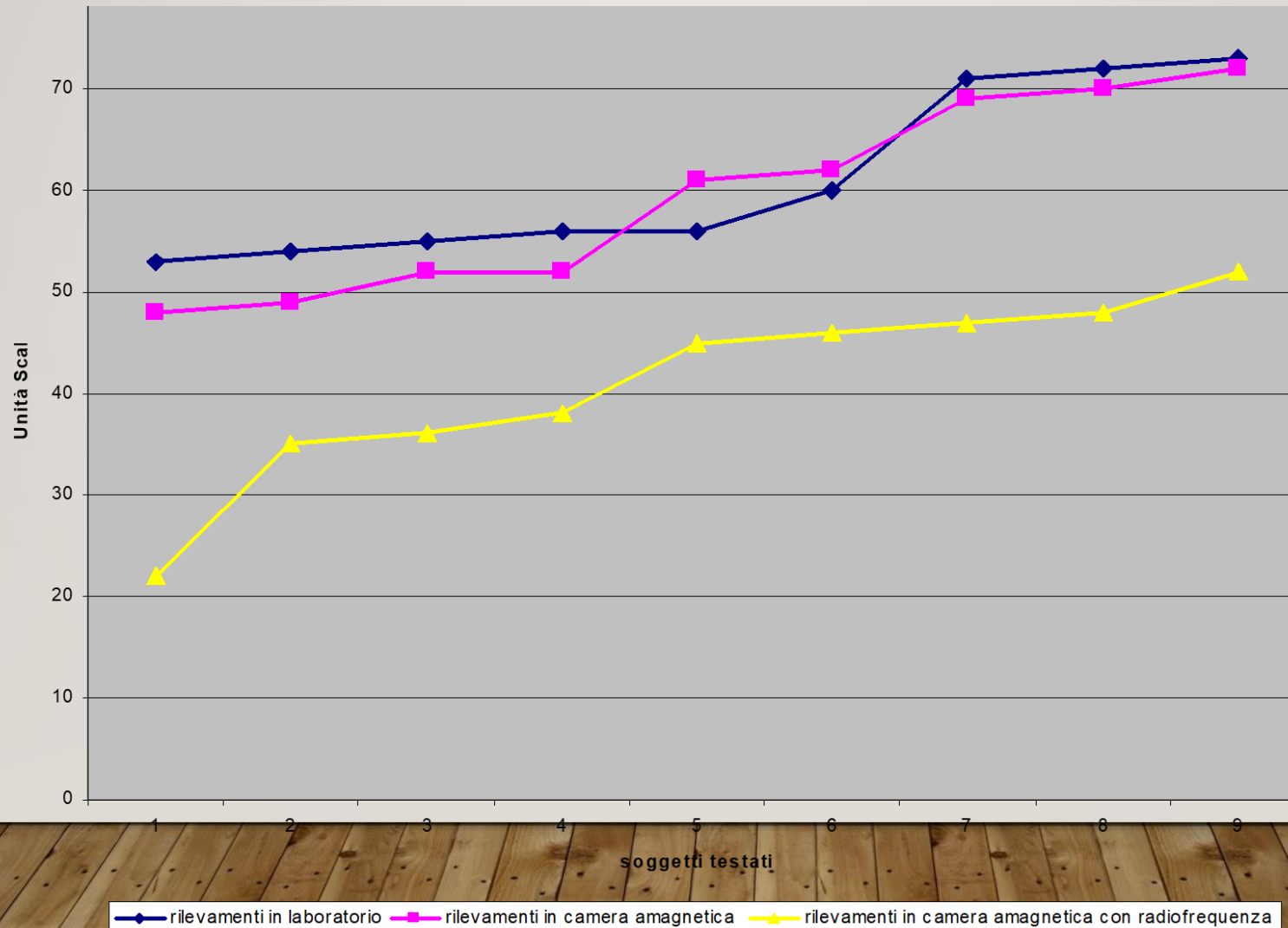
# THE ENIGMATIC WATER ACTIVATION FOR CURATIVE USED BY DR DEEP AND OTHERS

---

- Dr Deep's work could be important for the development of science and skills in medical practice, increase the efforts to any level to teach the basis of CHAKRA-NADI WATER skill and correlate R&D to share the powerful tradition with the modern science and medicine. Some related matter is offered here in this brief YouTube presentation about my book on Wilhelm Reich: <https://youtu.be/4lun8PyChKY> .
- An NADI WATER CENTRE was build in the MUSEUM OF FUTURE in DUBAI and leading scientist are looking in this enigma and in some complex clinical cases .
- Main part of these effects seems carried on meridian/Nadi seen as bioelectrisystem as we could see below in answer to many kind of signals strong and low till pure information from drug (all) mediate may be from Potential Vector  
<https://journals.aps.org/prl/abstract/10.1103/PhysRevLett.125.040401>

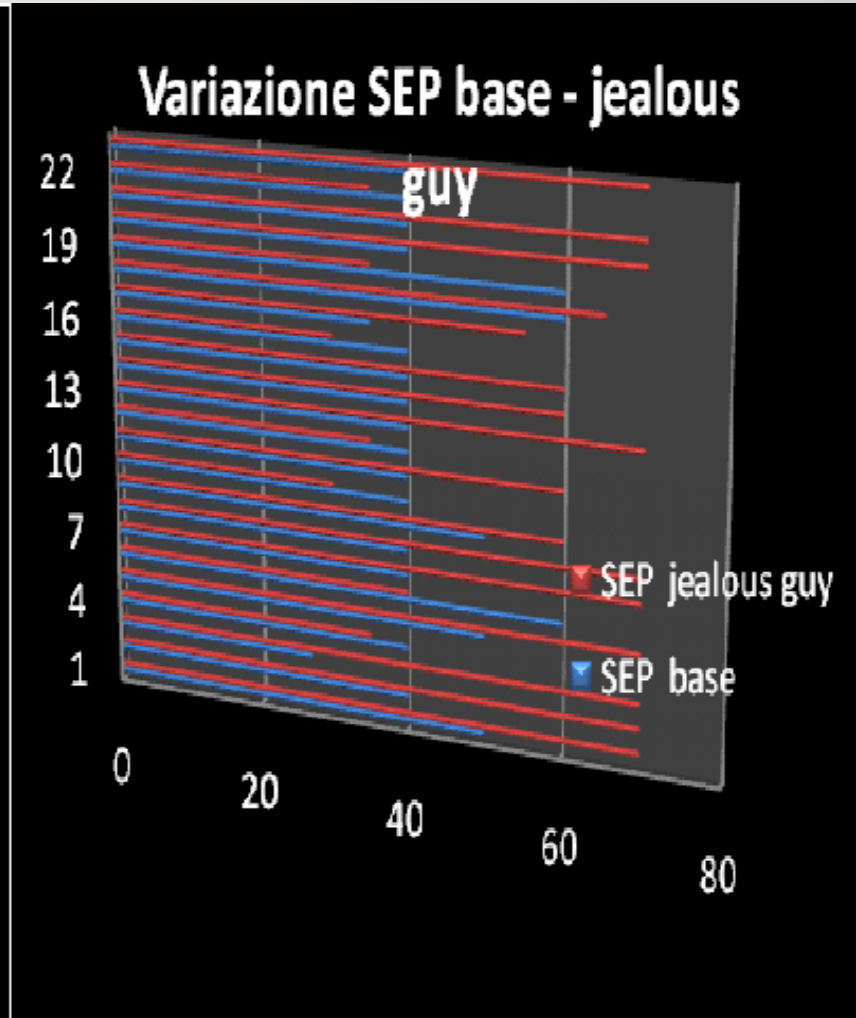
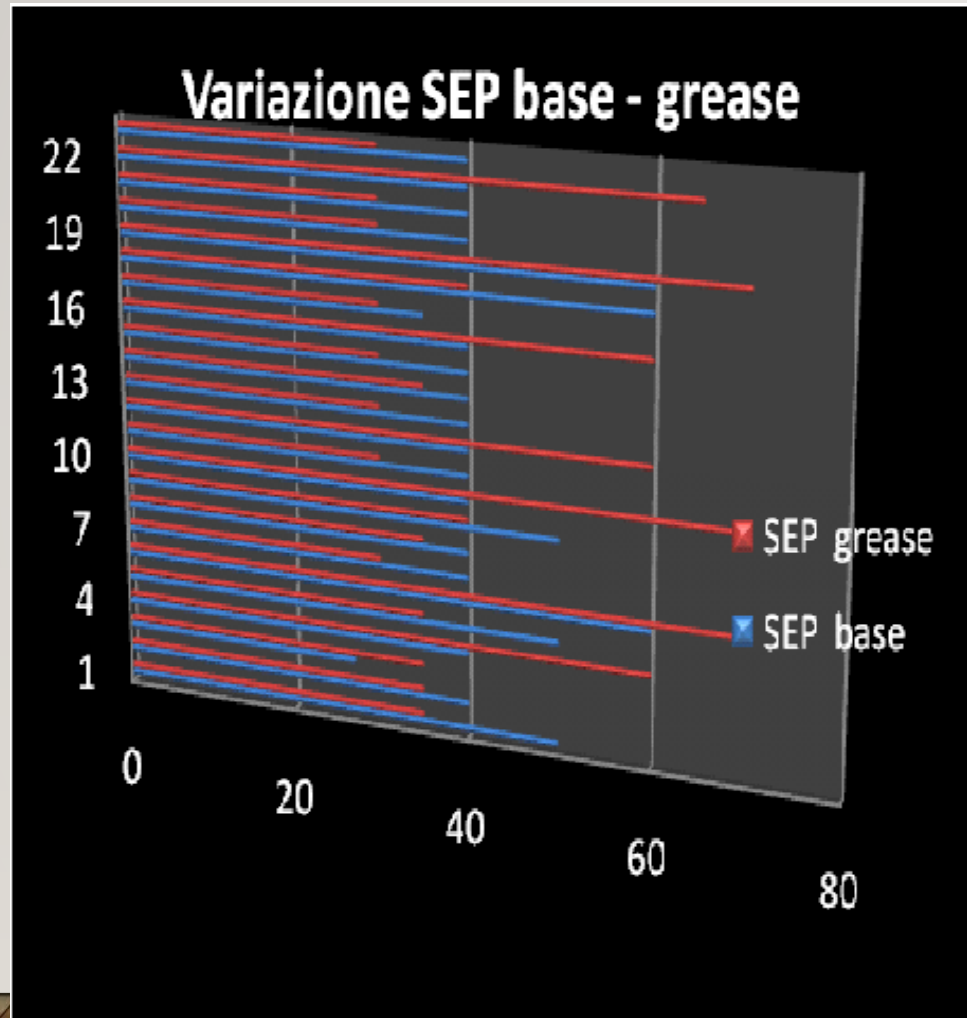
# Effects on the conductivity by magnetic field of cell phone antenna 10 V/mt - 900 GHz on seven men exposed in amagnetic room

V.I.Valenzi, S. Grimaldi, G. Quartieri, G. E. Gigante; G. Mileto, G. Monaco: *Osservazioni sulle variazioni bioelettriche nell'uomo indotte da campi elettromagnetici in camera amagnetica*. Ricerca Aerosp. Pag. 33-38, Anno XXI- N. 1. 2005

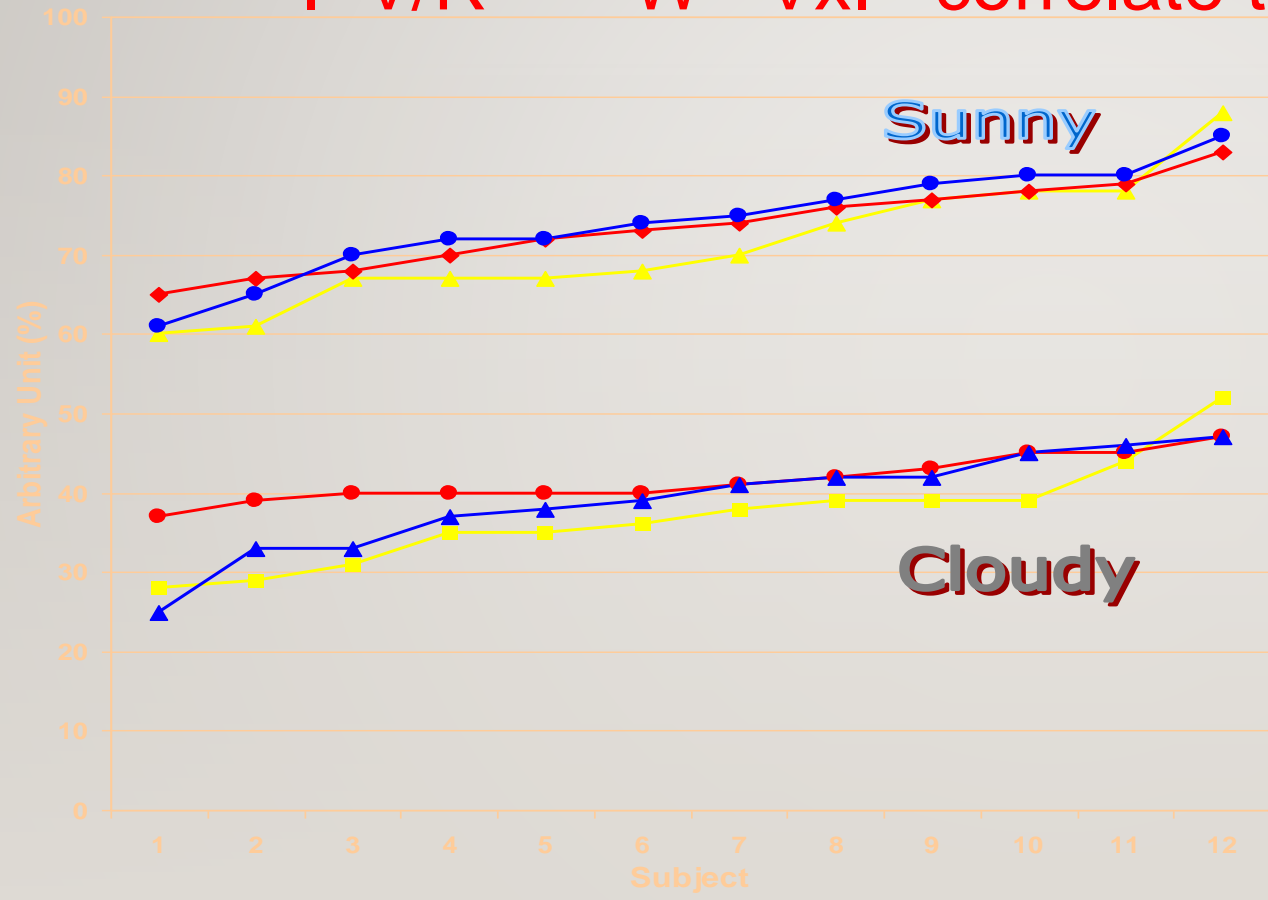




# BEATLES AND J. TRAVOLTA SEP EFFECTS



Metheroropatic people in sunny and cloudy day  
Bioelectrical measures on chinese meridians  
I V/R W VxI correlate to dinamometry



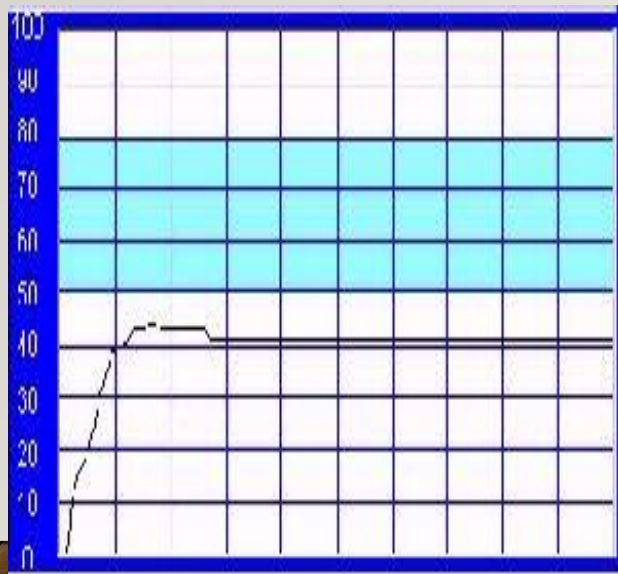
Ohm	V alore US
10 000	91
27 000	78
39000	70.5
47000	66.5
95000	50
100 000	48
130000	43
200000	32
220 000	29
300000	24
500 000	14
1000 000	8

Skin Electric Parameters and molecular signaling of drug  
*DRUG EFFICACY AND/OR INTOLERANCE IN METEOROPATHIC  
OSTEOARTICULAR DISEASES WITH 8 FANS TESTED*

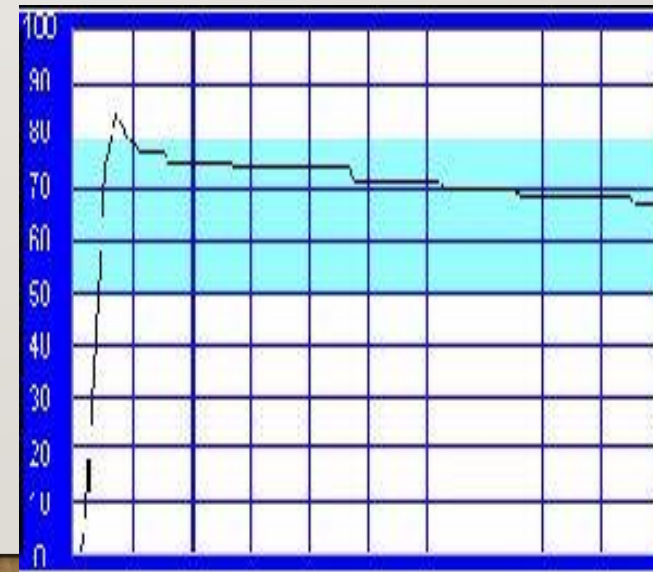
<http://web.tiscali.it/numedi/arc2002/0902/12.html>

V.I. Valenzi and M.L.Roseghini

**Without drugs**



**After Nimesulide 1,5 cm max far from body**



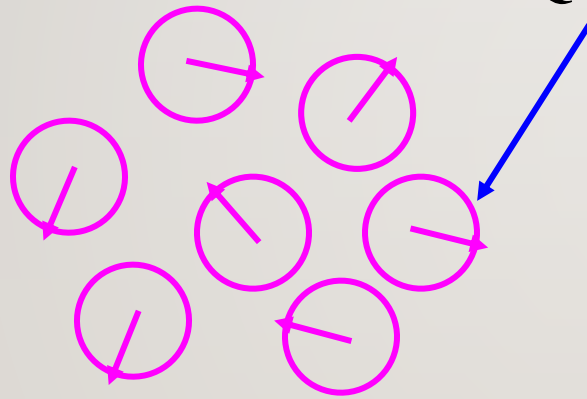
# QUANTUM COHERENT INTERACTIONS

LUCA GAMBERALE

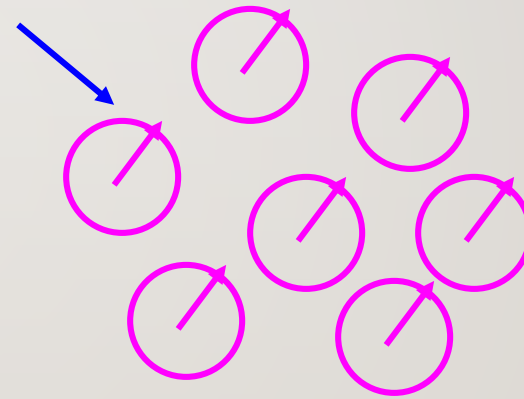
PIRELLI LABS – MATERIALS INNOVATION ADVANCED RESEARCH (MILANO,  
ITALY)

**N** scatters

**Quantum phase**



**Quantum incoherent**  
**Cross section like N**



**Quantum coherent**  
**Cross section like  $N^2$**

**$N \sim 10^{23}$**

!!!



# POTENTIAL VECTOR

*The Potential Vector extends to a nearby large area, without transporting energy but just information, exerting a "fine influence", we could say "informatica", that alters the phase of the present coherent systems.*

*Giuliano Preparata & Emilio Del Giudice*

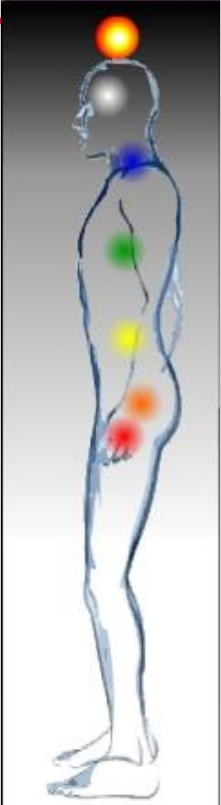
*(Scienza e Conoscenza, 17/2006)*



# ANCIENT INDIAN MEDICINE AND STRESS

---

- With a Euro-Indian group we are working in an attempt to find a bridge between THE FREUDIAN UNCONSCIOUS AND THE CHAKRAS INDIANI  
<https://it.wikipedia.org/wiki/Chakra>
- The direct experience developed and handed down by great European doctors from Patrick Veret to Umberto Grieco, teaches us that the ancient Indian access keys to the unconscious could be useful in the fight against stress, anxiety, panic attacks, etc.
- We await clarifications from these researches in order to clarify the connections between MIND, BRAIN AND CONSCIOUSNESS on the neuro-physiological level and PINEI, and new techniques to fight psychosomatic diseases and Panic Attacks



# SOME CASES SEEMS VERY PROMISING

- <http://www.cimb.me/casi-clinici.html>

[https://youtube.com/watch?v=PA6ciR\\_MQ6o&feature=share](https://youtube.com/watch?v=PA6ciR_MQ6o&feature=share)





My son, Dhruv, has Down Syndrome, a congenital genetic condition.

After receiving NADI Water I saw a massive change in him. In just seven sessions, we saw physical and cognitive changes in him that I just thought I would never see.

His thick fingers with large joints, became less thick and nodular. This facilitated radically improved fine motor skills. We saw massive improvements in the amount of written work he produced at school and general endurance in such activities.

Dhruv had a mental block when it came to reading and would flat out refuse to do it. This too improved massively, not only did he start reading more at school, but his reading level went up too.

The weakness in his eyes due to Bilateral Esotropia noticeably changed. Dhruv started making more eye contact and his tracking improved. He became more present as a result. His hand eye coordination improved, which his Physical Education teacher also picked up on.

Cognitively, it was difficult to get Dhruv's attention, he found it very hard to focus, this also improved, along with his logical reasoning. He was making more connections having more meaningful exchanges and as a result engaging more with his family and friends.

NADI Water helped to optimise my son's abilities without a shadow of a doubt. I cannot thank Dr Deep enough for all his selfless work. I encourage others to give it a try, you have nothing to lose and everything to gain!

  
Nisha

02/04/18